

Sletterkulo 37

Pattern Information	
Pattern creator	Ole Aabotsjord
Creation date	05-02-2018
Pattern difficulty	High

Lane Machine Information cont.	
Cleaner Spray On	4
Cleaner Spray Off Distance	30
Pin Deck Spray	No

Lane Machine Information				
Machine Model	DBA Phoenix Model C			
Pad Setup	Zone 1	Zone 2	Zone 3	Zone 4
	5	5	5	5
Last Cleaner Spray Distance	48			

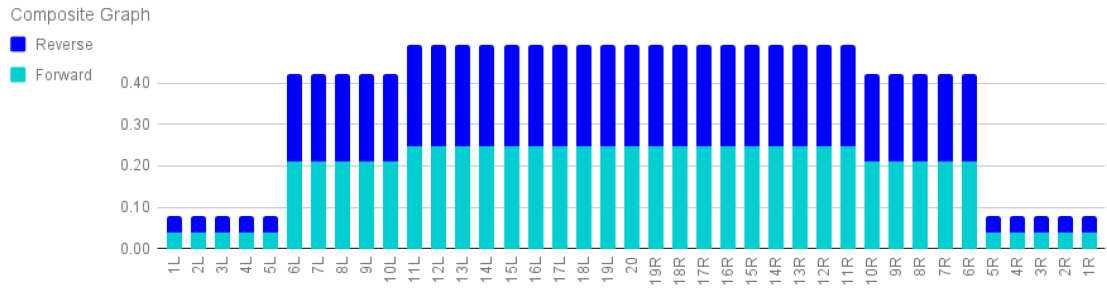
Pattern Parameters			
Oil Only Dust	Yes	Oil Pattern Distance	37
Start brush	0	Drop Brush In Reverse	37

Pattern Ratios					
Total Volume Ratio					
3L-7L:18L-18R	8L-12L:18L-18R	13L-17L:18L-18R	18L-18R:17R-13R	18L-18R:12R-8R	18L-18R:7R-3R
2.29	1.10	1.00	1.00	1.10	2.29

Center Information			
Lane Type	Brunswick Pro Lane	Lane Age	14
Lane Cleaner	Brunswick Judge	Cleaner Mixture Ratio	10 : 1
Conditioner	Brunswick Absolute Control		

Forward Settings					
Speed Settings			Distance, ft		
Forward Shift To 2nd Speed			1.00		
Forward Shift To 3rd Speed			36.00		
Forward Shift To High Speed			60.00		
Pad Settings, Left Side		Dist in, L	Dist ft, L	Pad settings, Right Side	
Zone 1 Pads Off (Board 35-40)		60.00	5.00	Zone 8 Pads Off (Board 1-5)	
Zone 2 Pads Off (Board 31-35)		320.00	26.67	Zone 7 Pads Off (Board 6-10)	
Zone 3 Pads Off (Board 26-30)		372.00	31.00	Zone 6 Pads Off (Board 11-15)	
Zone 4 Pads Off (Board 21-25)		372.00	31.00	Zone 5 Pads Off (Board 16-20)	
				Dist in, R	
				Dist ft, R	

Reverse Settings					
Speed Settings			Distance, ft		
Return Shift Down To 3rd Speed			34.00		
Return Shift Down To 2nd Speed			20.00		
Return Shift Down To Low Speed			1.00		
Pad Settings, Left Side		Dist in, L	Dist ft, L	Pad settings, Right Side	
Zone 4 Pads On (Board 21-25)		432.00	36.00	Zone 5 Pads On (Board 16-20)	
Zone 3 Pads On (Board 26-30)		408.00	34.00	Zone 6 Pads On (Board 11-15)	
Zone 2 Pads On (Board 31-35)		240.00	20.00	Zone 7 Pads On (Board 6-10)	
Zone 1 Pads On (Board 35-40)		120.00	10.00	Zone 8 Pads On (Board 1-5)	
				Dist in, R	
				Dist ft, R	



Notes
 Oljemengde er beregnet vha maskinfart, så Low Speed gir 100%, og de høyere girene vil gi olje %-messig basert på maskinfart i tommer per sekund. Ratio er beregnet vha disse tallene, og kan ikke garanteres å være rette.

Made by Jim Tore Jakobsen, Norway for Kegel Crossfire/DBA Phoenix wick machines, 2018. Also available for Brunswick Direct+ and Kegel Sanction machines. Contact: jimtore2k@gmail.com

1	2	3	4	5	6	7	8	9	10	11	12	13	14	15	16	17	18	19	20	21	22	23	24	25	26	27	28	29	30	31	32	33	34	35	36	37	38	39	40	41	42	43	44	45	46	47	48	49	50	51	52	53	54	55	56	57	58	59	60